

YATE TOWN COUNCIL

DISCOVER HOW WE'RE HELPING TO IMPROVE YATE FOR THE
BETTERMENT OF THE LOCAL AND GREATER COMMUNITY



SPRING NEWSLETTER 2021

2020/21 review • Covid-19 Pandemic
Project Updates • Annual Town Meeting
www.yatetowncouncil.gov.uk

MESSAGE FROM THE MAYOR

Tuesday 23rd March 2021 was a National Day of Reflection marking one year since the first Covid-19 lockdown began. On this historic day we all had an opportunity to reflect back over the last year, the pandemic, the hardships and how it affected us.

Personally, this past year has been the most difficult and challenging

one I have ever experienced, at work, at home and in our community as the pandemic swept into our lives. It has affected each and every one of us in so many different ways.

We have had to live with the restrictions and changes to everyday life which have prevented many planned gatherings with family and friends and seen community events and significant celebrations either put on hold, cancelled or significantly reduced; weddings, birthdays, graduations, anniversaries and funerals have ...



... all been different this past year.

Many people have not been able to visit or support loved ones; they have not been able to be with those they care about during the most difficult of times which I have found most heart-breaking this past year.

I am proud of how well we as a community have responded to those challenges. The community spirit of each and everyone locally has highlighted to me what a fantastic place this is to live in. I am not going to mention specific individuals, but I thank everyone who has put others first, helped a neighbour, friend or complete stranger, either on their own or as part of an established or newly formed group.

Your help has been very much appreciated and inspirational.

I'm also thankful that the national vaccination roll out is being so successful. It is our way out of the pandemic and the restrictions it has placed upon us all. I urge each and everyone to take up the vaccine when you have the opportunity to.

Hopefully some time very soon we can return to a new normal and see an end to restrictions because of Covid in our everyday lives.

Councillor Karl Tomasin, Mayor of Yate

COVID-19 UPDATES

Coronavirus Battle Fund

Yate Town Council (YTC) has grant funds available to local organisations to support the Yate community in the battle against the coronavirus and help the residents of Yate.

If your organisation is assisting the local population in this time of crisis and needs financial support, please complete a form. Available from on our website from April 2021 onwards.

Yate and Sodbury Covid-19 Help & Support Facebook Group

Yate Town Council (YTC) worked hard with this wonderful group, neighbourhood watch schemes, local churches and other local parish councils to bring a co-ordinated response towards helping our local vulnerable and isolated residents.....

<https://www.facebook.com/groups/650869675671695/>

Listening Service

.... The group also launched a Listening Service to help those who would benefit from a friendly chat with someone local from Yate or Chipping Sodbury over the telephone.

This is a community initiative which was set up by the community for the community.

<https://www.facebook.com/groups/ysnslisting/?ref=share>



Yate Rocks! 2021

Unfortunately for the second year in a row, we have taken the sad decision to cancel our Yate Rocks! event at Kingsgate Park.



Virtual Easter Bonnet Competition

For the second year running, Friends of Kingsgate Park ran the popular Easter Bonnet Competition. All entrants will be receiving an egg, with prizes for 1st, 2nd and 3rd winning entries.



St George's Day Celebrations

23rd April - 7.30pm St George Talk - the history of St George and the Medieval context. Zoom lecture.

24th April 1.30pm and 3pm. The Ineptitudors! Madcap Tudor entertainment comedy for all the family from Same Same Theatre. Live Zoom sessions.

English folk, craft workshops and the St George and the Dragon play throughout the 23rd, 24th and 25th of April on YouTube (Yate and District Heritage Centre).

EVENTS AND MEETINGS UPDATES

Town Council Meeting Dates 2021/22

All members of the public are very welcome to attend meetings, which currently take place online (Zoom) due to Covid-19 restrictions. Fifteen minutes are set aside at the beginning of each meeting for the public to ask questions. For meeting dates for the full year, and how to join them, please visit our website.

13 April	Planning	08 June	Finance & Governance
27 April	Annual Town Meeting	15 June	Planning
27 April	Planning & Transportation	22 June	Full Council
04 May	Annual Town Council Meeting	29 June	Planning & Transportation
18 May	Environment & Community	06 July	Environment & Community
25 May	Planning	20 July	Finance & Governance
		27 July	Planning



“

**"JOIN US AT THE
ANNUAL TOWN
MEETING - ALL
WELCOME "**

ANNUAL TOWN MEETING

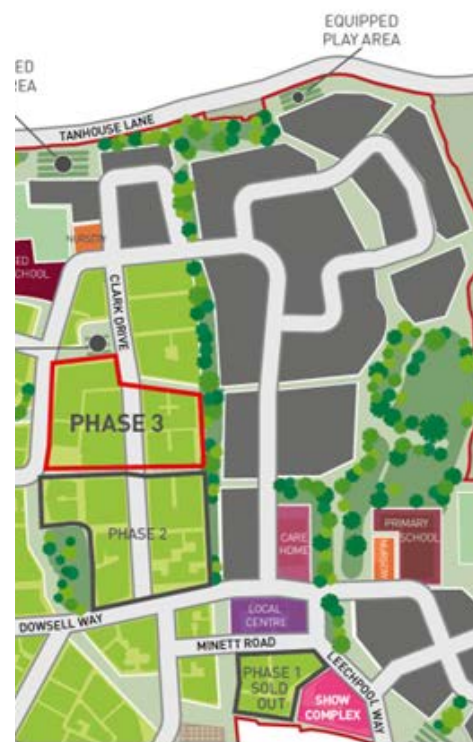
NOTICE IS HEREBY GIVEN

**that the
Annual Town Meeting
for the parish of Yate
will be held online
on 27th April 2021
at 6.30pm**

All Welcome

**Zoom Link: Annual Town Meeting April 2021
Meeting ID: 934 9835 5525
Passcode: 421314**





MULTI ACTIVITY BUILDING AT YOSC

Since January 2021 YTC have been building an exciting new facility at Yate Outdoor Sports Complex (YOSC)! The Multi Activity Building, known as the MAB, will be available for hire by community groups from the end of April 2021. In recent months, the facility has undergone a full fit out including accessible welfare facilities and a multi-purpose, seamless, polyurethane sport floor (made from 85% recycled materials), making it the perfect venue for dance, fitness and aerobic groups.

The MAB has also received investment from SGC Councillors by way of Member Awarded Funding and Area Wide Grant funding, to support the installation of multi-use sports equipment including exercise bikes, treadmills and many other health and wellbeing items.

Hire rates start at £11.50 (+vat) per hour. For more information and to make a booking enquiry for when the facility opens, please contact info@yatetowncouncil.gov.uk

NEW NORTH YATE COMMUNITY BUILDING

Yate Town Council (YTC) is pleased to announce their agreement in principle, to work with South Gloucestershire Council (SGC) to provide a new Community Centre for the residents of Ladden Garden Village and the surrounding communities. This partnership aims to deliver the best facilities that the site can accommodate to which SGC will contribute the baseline budget and to which YTC has agreed, in principle, to work with SGC to deliver an enhanced specification for the build, to ensure the enhanced facility meets the needs of the community for many years to come.

Both SGC and YTC are currently working to identify the possible cost of this new facility, due to be located in the "local centre". Detailed proposals for the facility and the partnership will come forward for future consideration by Full Council and consultation with residents.

For further information and to keep up to date with this project, contact us at Info@yatetowncouncil.gov.uk or follow us on social media.

Image credit: Barratt homes (see local centre)



YATE AGEING BETTER CHAMPIONS

Yate Town Council consulted with maturing residents to find out how we can make Yate a great place within which to age better. The aim is to make our town more age friendly and the 'Champions' would be a group who could help to achieve that. The 'Champions' would keep their ears to the ground and listen to problems and share information and ideas with people to find out the best way to be fulfilled and active and 'Age Better'.



The Pop Inn Cafe (PIC) first opened its doors in 2001, celebrating 20 years in operation.

During lockdown one, two and three, time has been wisely used. The kitchen counter was extended, to allow for safer distancing between volunteers. The walls have had a fresh coat of paint and the furniture has been moved to allow for more space to move

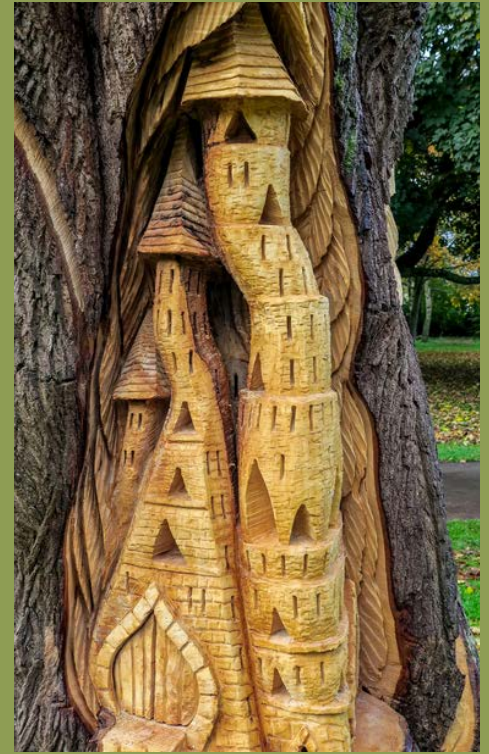
around. New signage is due to go up, both inside and out, sporting the new PIC logo. Like all Yate Town Council provisions – we too are embracing and promoting the Yate Ageing Better message and in particular, its Dementia friendly ethos, by trialling a Dementia Friends Friday afternoon session once the cafe re-opens. This session will be open for all, and we particularly encourage those who are living with dementia and persons caring for family and friends to come along. There will be various fun and light-hearted activities as well as time to sit, chat and share experiences with likeminded souls.



UK Network of Age-friendly Communities

Yate Ageing Better made a successful application for Yate to be recognized by the 'Centre for Ageing Better' as an 'Age-Friendly Community'.

In an Age-friendly Community, services, local groups, businesses and residents all work together to identify and make the changes in both the physical environment (e.g. transport, housing, outdoors spaces) and social environment (e.g. volunteering, leisure, employment, and services) that are relevant to their own local context and enable people to lead healthy and active later lives.



KINGSGATE PARK GATES

As part of Yate Town Council's 'Yate Ageing Better' initiative, our Estates team have transformed the entrances to Kingsgate Park by painting each entrance point in a variety of different colours.

For those living with Dementia and sight related difficulties, accessing open spaces can become stressful and confusing. By using a good range of contrasting colours, the entry and exit points become more familiar and easy to navigate.

Yate Town Councillor Sandra Emms, one of the Members of the 'Yate Ageing Better, Health and Wellbeing Steering Group' commented:

'We want to say a big 'thank you' to the Town Council Estates team for painting the gates at the entrances to Kingsgate Park. The coloured gates help all people (including those in different stages of living with dementia) to get around and continue enjoying our beautiful park. This is part of our ongoing commitment to making Yate a Dementia Friendly Community.'



Yate Town Council Estates Team renovated Gerry's Bug Hotel - it is now a much desired detached residence for bugs.

Thank you so much to the team who look after our park so well.

FRIENDS OF KINGSGATE PARK INTERPRETATION BOARDS



Friends of Kingsgate Park and Yate Town Council are pleased to announce we now have information boards placed in the park. One depicts the wildfowl that use our lake and the other shows some of the many trees there which can be identified by their bark and trees.



ARMADILLO VENUE

The paving work was completed just before 8th May 2020. The new pavings have extended the area for ball sports, making the space more conducive for additional uses such as badminton, volleyball and tennis to name a few.

LITTLE BAGS OF HAPPINESS

Following the most recent lockdown, Armadillo's youth team were again prepared and ready for action. With many of the usual activities needing to cease, the team once again donned their high viz jackets, hats and scarves, and in teams of 2 patrolled the local parks and community areas. Over the months of January and February the youth team engaged with over 520 young people, and by going out and being visible in the

community, Armadillo was able to offer support and advice to those most in need of guidance. This in turn, gave rise to the recognition of struggles and challenges faced by many during this difficult time. Being a team kind of heart and generous in spirit, they decided to act. They created wellbeing packs called 'A Little Bag of Happiness', funded by YTC, to hand out during the half term break. Nearly 50 bags were created and distributed, putting a much-needed smile on many young faces. It goes without saying, this has been a tough year for many, but now with lockdown easing and the end goal in sight, we're all looking forward to returning to what is now being termed as 'the new normal'. Youth sessions will resume in May – albeit in smaller numbers and hirers and seniors' events will once again return to the building.



YATE & DISTRICT HERITAGE CENTRE 20TH BIRTHDAY

Yate Town Council opened the Yate and District Heritage Centre to the public following the refurbishment of the old barn formerly belonging to The White Lion. This great achievement was the result of tireless work and enthusiasm from local councillors, council staff and local historians, including Councillor Chris Willmore and Gladys Nelson.



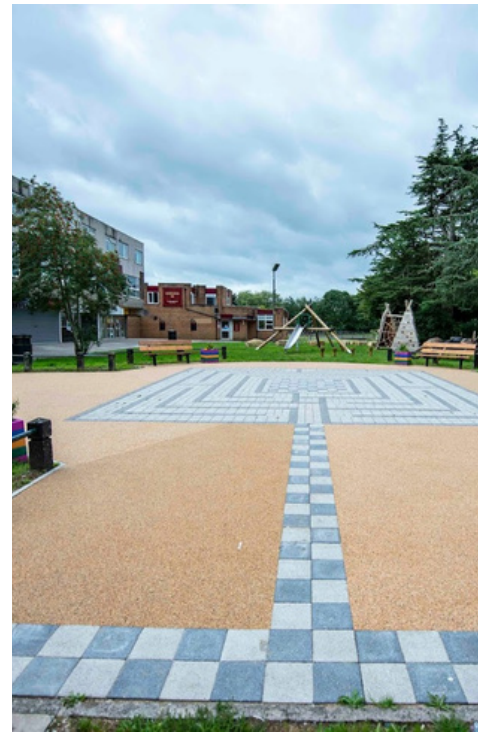
YATE & DISTRICT HERITAGE WALKING TOURS

Initially planned for the Open Days weekend, these tours have become so popular that the teams will be taking tours of Yate throughout the year.



YATE HERITAGE CENTRE KIDS ZONE @YHCKIDSZONE

Yate Heritage Centre launched a new education page on Facebook for families in Yate, the district and beyond. Each week you'll find new activities for arts, heritage and culture including workbooks, quizzes, videos, 360 museum tours, crafts, food recipes and much more!



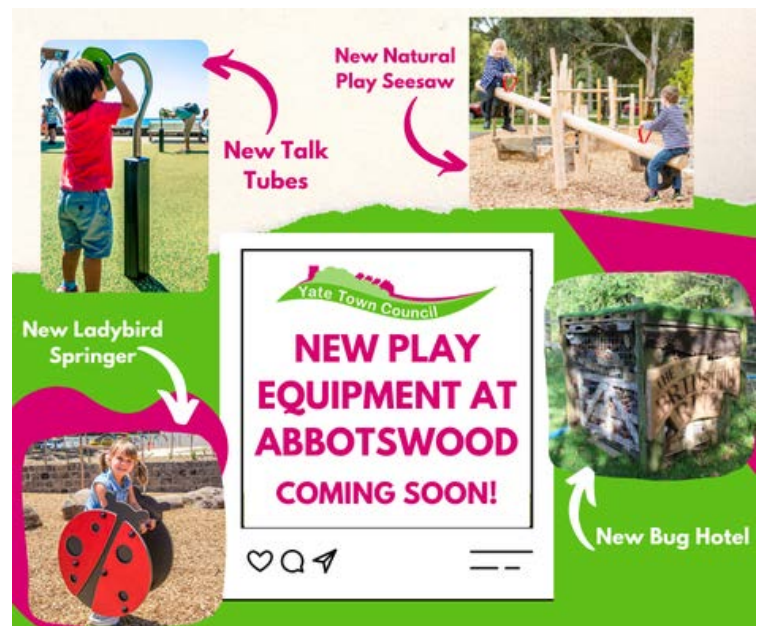
MILLSIDE PLAY AREA

We have a programme of continually developing our local play facilities to provide a high standard of play opportunities and space to exercise, which has become even more important to us this year, more so than ever before.

2021 for us will be a busy year. One of our play area enhancement projects taking shape is the one we are pushing forward on for Millside. We are working with local residents and stakeholders to map out key priorities for play area improvements and on a new wooden sculpture trail.

Yate Town Council secured £45,155.83 of funding via the S106 developer's fund linked to the Amberley Lodge housing development in North Yate. The funds will enable us to invest in the play area and park space.

ABBOTSWOOD PLAY EQUIPMENT



ABBOTSWOOD PAVING PROJECT

Thanks to funding from S106, a new paving area at Abbotswood has been specially redesigned into a complicated irregular network of passages and paths in which it is difficult to find one's way!



APPRENTICES

Yate Town Council is pleased to be currently supporting three apprentices within our Estates, Community Projects and Service Support Teams. Our staff play a key role in mentoring and general support towards each individual's learning plans.

Our newest recruit, Kezi, started her L2 Business Administration apprenticeship during lockdown and has dealt with the added challenge of remotely learning her role in her stride.

"My name is Ashleigh (pictured above), I'm 23 and I am the community support apprentice at Armadillo Youth Venue & Café. I recently completed my Level 2 Business Administration Apprenticeship with Yate Town Council. I am now continuing my learning with a Level 3 Apprenticeship with the Armadillo Team.

I have been lucky enough to have both in office experience and now working from home experience. I have enjoyed working across the whole of YTC and have had so many new experiences with the best team. I have found being an apprentice the best learning experience I have had throughout my education. Each day there is something different to learn which keeps the job very exciting! I cannot wait to be a part of some future projects and continue to learn & grow with the whole of Yate Town Council".

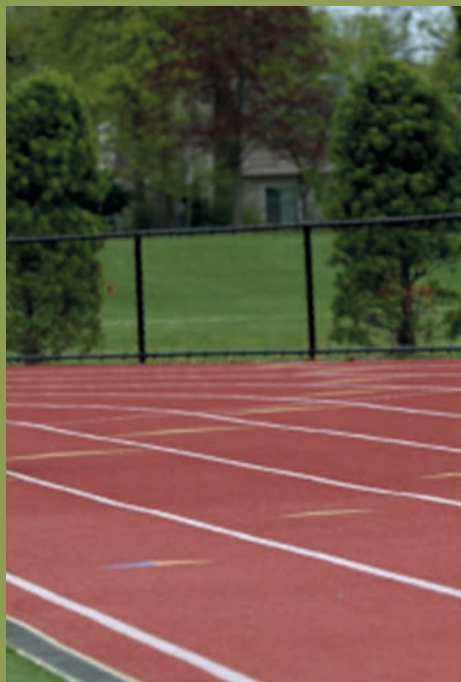
FAREWELL TO DEPUTY TOWN CLERK & RFO



This summer we say a fond farewell to Steph Davies our Deputy Town Clerk and Responsible Finance Officer, who retires after 30 years of service.

Steph began working for the Town Council in 1991 and has seen the Council grow and grow over the years. Steph has kept a keen eye on the finance side of things and was heavily involved in Town Council projects ranging from the refurbishment of Yate Heritage Centre, the creation of the Pop Inn Café and the Armadillo youth café, the building of Peg Hill Skatepark and BMX park as well as much, more more.

We will miss Steph but wish her a well deserved rest after all these years!



DISABILITY EQUIPMENT FOR YOSC

Yate Town Council has secured £27,506.87 funding to buy a range of disability equipment to be used at Yate Outdoor Sports Complex (YOSC).

The funding for this project was successfully secured by a Yate Town Council bid submitted to South Gloucestershire Council, who administered the funds through Section 106 (S106) financial contributions from housing developers.

S106 funding awarded for track and field disability equipment will continue the Town Council's work in partnership with operators of the site, YOSC Ltd., in providing accessible facilities and equipment to ensure a more inclusive, equal experience for all members of the local and wider community.

The equipment being purchased includes eight racing wheelchairs, adaptive equipment for discus, javelin and shot and equipment for diverse indoor activities including boccia, weights, mats and also guide rails and navigational equipment.

Yate Town Councillor Karl Tomasin, a member of the YOSC Facilities Project Steering Group, commented:

"As part of our continued commitment and aspirations to provide sports facilities and opportunities for all through our partnership with YOSC, we are pleased to be able purchase a variety of equipment for para and disabled athletes to use or have a go for the first time, as soon as it's possible to welcome users back to YOSC.

We thank everybody involved in the S106 funding application process and look forward to seeing even more people using the equipment during their time on site."

To find out more about the disability equipment and the sports available at YOSC, please contact YOSC Ltd on 01454 326600.

Cabinet Member for Communities and Local Place, Cllr Rachael Hunt said:

"We are delighted that South Gloucestershire Council has been able to negotiate this funding from local developers to support people with disabilities to participate in sporting activities by providing a range of track and field equipment. Sport and exercise helps people to live healthy lifestyles and can boost mental wellbeing, so it is fantastic that people in the area will directly benefit from this funding."



NEW ALLOTMENTS

Yate Town Council is currently thinking through plans for allotments in the local area. Please contact us to be added to the waiting list if this interests you.

COMMUNITY GRANTS ROUND UPDATES

Yate Town Council promotes an active community in Yate by awarding grants annually to non-profit making organisations. These organisations work for the benefit of Yate parisoners, with the intention of improving the range of services and activities in the town.

If you organisation is in need of some financial assistance and provides such a service or activity, you can submit a grant application for consideration before the **closing date of Friday 25th June 2021.**

ZERO TOLLERANCE TO GRAFITTI

The aim of the Graffiti Project is to clean up Yate in terms of the graffiti which has become more abundant throughout the town. Currently being tackled are utility cabinets, with larger projects being picked-up when restrictions are lifted.

Pictured: Councillor Alan Monaghan at the Community Engagement Forum

DEDICATED TREES

Two trees/shrubs were planted at Poole Court in March 2021 in recognition of the Covid-19 community heroes and volunteers for dedicating their time during the pandemic.

A second tree was planted to mark the Town Council's commitment to the Carbon Net Zero project.



CARBON NET ZERO

Since making our declaration of Climate and Ecological Crisis and sharing our commitment to action in February 2020, we are so proud to share the changes we have made.

This year we made a commitment to paperless meetings and introduced an online version of our annual newsletter, saving more than 75,000 pieces of paper from landfill.

We pushed pause on plastic, inducing new plans to maximize plastic reduction through purchasing sustainably, increasing recycling and getting creative to repurpose the more unusual plastics we come across!

We've asked our partners and hirers to help us at our venues by going plastic free.

We installed new recycling bins in open spaces and play areas, reviewed our waste contracts and rearranged community cleaning to ensure all waste from our bins

made it to a recycling centre.

We saw the light and made a plan to replace all our venue lighting with LEDs! We signed up to a Green Energy Tariff, promising 100% investment in renewable energy. We recycled 2.4 tons of waste bricks from the new play area at Abbotswood – creating too many pizza ovens to count!

We've found ecological solutions to maintenance works, scoured the market for electric alternatives and reduced use of chemicals by introducing environmentally friendly products.

We have sustainably increased our use of natural materials, planted trees, created new wildflower areas and built lovable bug hotels to support local wildlife.

We have agreed to replace all diesel fuelled vans over the next 3 years with a fleet of electric

vehicles, following the successful lease of an Electric Renault Kangoo.

In response to the coronavirus pandemic we had a council wide black out, turning down our buildings to minimize use of energy while our teams work from home. We donated surplus food stocks from our cafes to food banks, community food projects and stocked up local emergency services with coffee and biscuits to keep spirits high!

But above all, Yate Town Council has undertaken a lifestyle change, we've looked to the future to ignite a passion within our workforce to protect the environment and reduce our carbon footprint with every task and every decision we make.

We welcome our communities to join us on this journey and to get in touch with our teams if you have any ideas or suggestions for reducing our community carbon.

ROUND UP

A look back over 2020/21



VE DAY 75TH ANNIVERSARY

With community events cancelled due to Covid-19, to commemorate 75 years since the end of WW2, on Friday 8th May 2020, people were encouraged to commemorate this day at home.

VJ DAY COMMEMORATIONS

On Saturday 15th August 2020 VJ Day Commemorations took place with two very small services at St Mary's Church, due to Covid-19, to mark 75 years since VJ Day, which signified the end of the Second World War.



REMEMBRANCE SERVICE

2020 Remembrance Service usually attended by hundreds of local people, was reduced to a handful of community representatives due to the Covid-19 lockdown at the time.



PARNAL AIRCRAFT FACTORY BOMBINGS

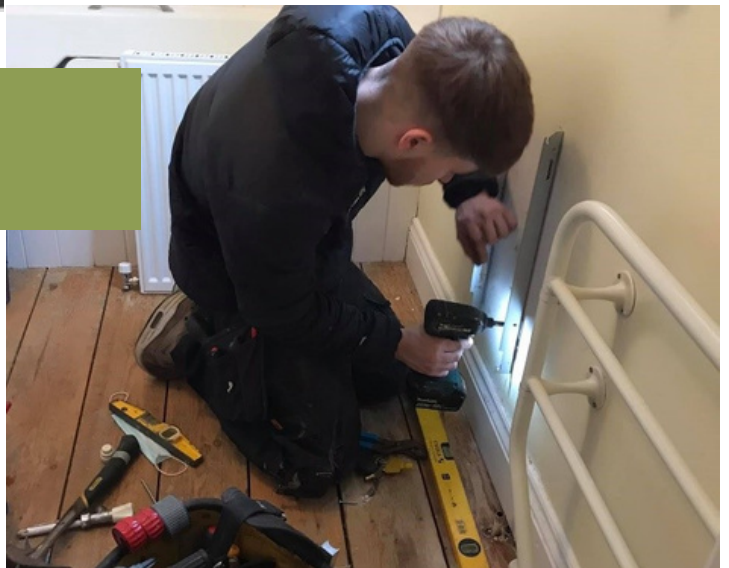
The Parnall memorial at St Mary's Church was created in 1950 and every year on Remembrance Sunday a small service is conducted to mark the loss of the 55 men and women including 3 unidentified people. It is a rare example of a memorial to civilian casualties in wartime.

Saturday 27th February 2021, marked the 80th Anniversary of the Parnall Aircraft Factory bombings.

WILLS DAVIS ATWELL STUDENT GRANTS

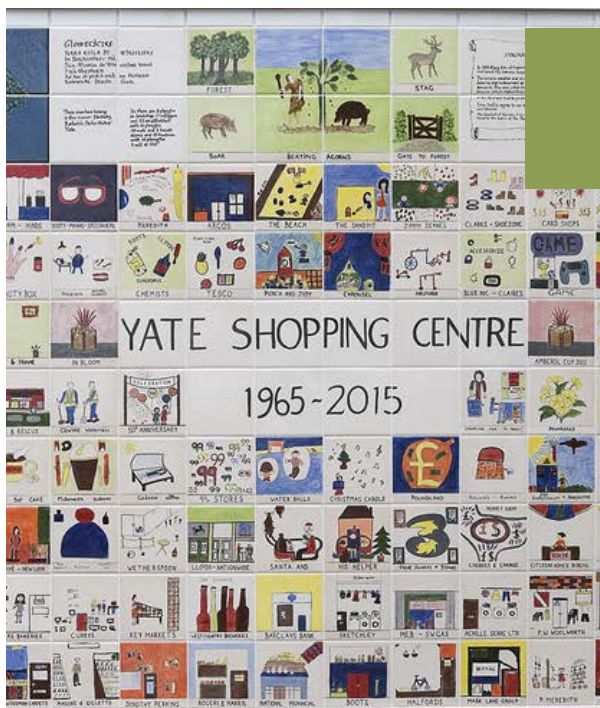
In 2020 over 50 applications were received from students living in the Parish of Yate. Grants are given to 16 to 21 year olds who are either starting or attending college / university/apprenticeships.

Photo Cody Benden, Plumbing Apprentice



OVERFLOWING RUBBISH BINS

We have been working with McDonalds regarding two replacement bins near the shopping centre which will include a recycling section to help towards reducing litter in the area.



SHOPPING CENTRE TILE MURAL

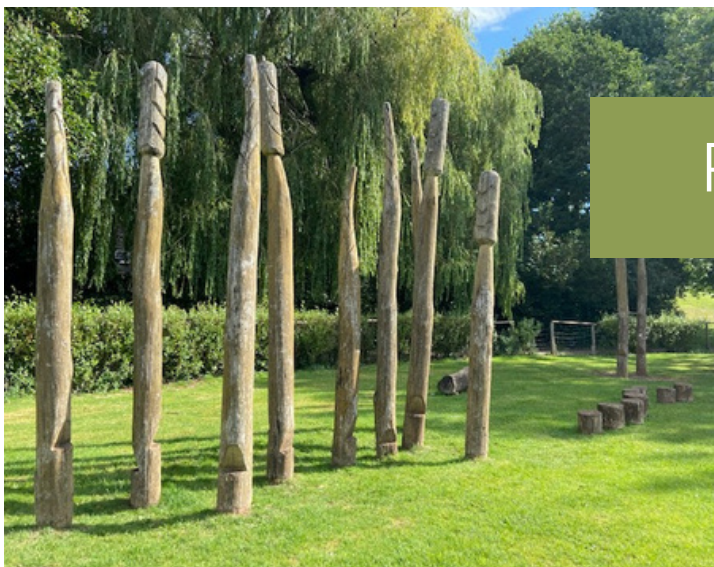
The tile mural in Yate Shopping Centre consisting of hand-painted tiles designed by school children in 2005 was refurbished in 2020 with money raised by Yate Community Plan. The tiles have now been sealed to protect and preserve them from further damage.

Thanks to all those who donated to this project.

DEFIBRILLATORS FOR YATE

Yate Town Council have been delighted to install units at the Armadillo Youth Venue, Poole Court, Kingsgate Park (Elmwood Entrance), Sunnyside Bowls Pavilion, with more coming soon to:

Yate and District Heritage Centre -
Brinsham Fields Carpark - Yate Parish Hall -
Abbotswood - Yate Common



PLAY AREA TRAIL MAP

Our play area trail is designed to get families in Yate exploring the 14 amazing facilities and sites we look after around our Town.

Visit our website for the map and collect the letters to make the secret word.



LOZENGE ROUNDABOUT REFURB

Over the summer the lozenge roundabout by B&Q was improved with the installation of landscaping and a “tipping wagon” and “skip bucket”. These items reflect on the open cast mining heritage of Yate together with our twinned town Bad Salzdetfurth, who donated the “Salt Truck” to Yate in 1985.

CHRISTMAS COUNTDOWN & CHRISTMAS TREE TRAIL

Yate Town Council shared a Christmas Countdown on our Facebook page highlighting what we do and the amazing facilities we have.

We were also happy to participate in the St Mary's Church charity Christmas Tree Trail.



20 YEARS OF PEG HILL SKATE PARK



On Saturday 11th August 2001 Peg Hill Skate Park was officially opened by the then Mayor Councillor Margaret Bracey. To celebrate the opening of the park a BBQ was held on the site.

YATE TOWN COUNCILLORS

Yate Central



John Emms



John Ford



John Gawn



Margaret Marshall



John Serle



Penny Thoyts

South Gloucestershire Councillors

Yate North

Ben Nutland
Mike Drew
John Davis

Dodington

Tony Davis
Louise Harris
cllrharris@dodingtonpc.org.uk

Yate Central

John Gawn

Ruth Davis 01454 881415
ruth.davis@southglos.gov.uk

Yate South



Tony Davis



Cheryl Kirby

Yate North



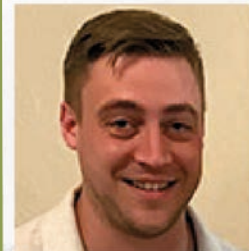
Ben Nutland



Chris Willmore



Mike Drew



John Davis



Sandra Emms



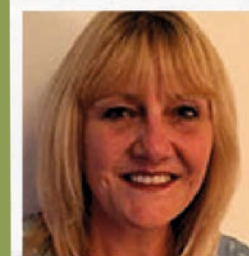
Alan Monaghan



Karl Tomasin



Wully Perks



Jane Price



YATE TOWN COUNCIL

WORKING HARD FOR YOU



CONTACT US

Yate Town Council, Poole Court
Poole Court Drive, Yate, South Glos. BS37 5PP
Tel: 01454 866506 • Email: info@yatetowncouncil.gov.uk
www.yatetowncouncil.gov.uk

COVID-19

TOWN CLERK
HAYLEY TOWNSEND

OFFICE OPENING HOURS
8:30AM TO 5:00PM (MON TO THURS)
8:30AM TO 4:30PM (FRI)

EVEN THOUGH OUR OFFICES
ARE CURRENTLY CLOSED, OUR
STAFF AND COUNCILLORS ARE
WORKING HARD BEHIND THE
SCENES TO ENSURE THAT WE
DELIVER OUR SERVICES AND
HELP THOSE WITHIN OUR
LOCAL COMMUNITY.
FOLLOW OUR SOCIAL MEDIA
PLATFORMS AND WEBSITE TO
STAY UP TO DATE WITH NEWS
IN REGARDS TO
COVID-19 AND GENERAL
COUNCIL BUSINESS

