



18 May 2016

You are hereby summoned to attend a Meeting of the **ENVIRONMENT AND PLANNING COMMITTEE** of **Yate Town Council** to be held at Poole Court on **TUESDAY 24 MAY 2016** between 7.30pm - 9.00pm for the purpose of transacting the business set out in the Agenda below.

*H Townsend*

Hayley Townsend  
Town Clerk

### AGENDA

*In the exercise of Council functions, Members are reminded that the Council has a general duty to consider Crime & Disorder, Health & Safety, Human Rights and the need to conserve biodiversity. The Council also has a duty to tackle discrimination, provide equality of opportunity for all and foster good relations in the course of developing policies and delivering services under the public sector Equality Duty and Equality Act 2010.*

*In the event of a fire alarm or other emergency (signalled by a continuously ringing bell), please exit the Council Chamber and leave the building through the nearest fire exit or safest evacuation route. Please meet by the flag pole in the car park. (NB: The nearest fire exit is located at the end of the corridor. (Exit the Council Chamber and turn right)).*

**1 Apologies for absence.**

**2 Declarations of Interest under the Localism Act 2011**

*Members who consider that they have an interest are asked to: (a) State the item number in which they have an interest, (b) The nature of the interest, (c) Whether the interest is a disclosable pecuniary interest, non-disclosable pecuniary interest or non-pecuniary interest.*

**3 To receive any requests for dispensations.**

**4 Public Participation Session with Respect to Items on the Agenda.**

**5 Election of Vice-Chair of the Environment and Planning Committee.**

**6 To consider the following items on the Clerk's Report:**

**1 Highways and Transportation**

- 1/1 Friends of Yate Station
- 1/2 Traffic and Transport
- 1/3 Bus Shelter Review
- 1/4 Salt Truck Roundabout

**2 Town Centre**

- 2/1 Yate Town Centre Strategy Group
- 2/2 Yate Leisure Centre



- 3 Town Council Play Areas, Parks, Open Spaces and Sports Facilities**
  - 3/1 Estates Supervisor's Report
  - 3/2 Yate & District Bowling Club
  - 3/3 St Mary's Village Green
  - 3/4 Fields in Trust
  - 3/5 Lighting at YOSC
  
- 4 South Gloucestershire Council Open Space**
  - 4/1 The Common
  
- 5 Sub-Committees and Working Groups Responsible to Environment and Planning Committee**
  - 5/1 Allotments Sub-Committee
  - 5/2 Planning Sub-Committee
  - 5/3 Public Rights of Way, Commons and Greens Sub-Committee
  - 5/4 Outstanding Reports
  
- 6 Joint Committees Responsible to Environment and Planning Committee**
  - 6/1 Joint Cycleway Group
  - 6/2 Outstanding reports
  
- 7 Reports from Representatives on Outside Bodies**
  
- 8 Public Space Protection Orders (Dog Control Orders)**
  
- 9 Consultations**
  - 9/1 Urgent Consultations
  
- 10 Wayleaves**
  - 10/1 St Mary's Village Green
  - 10/2 Abbotswood
  
- 11 Fields At North Yate**

**TOWN CLERK'S REPORT TO ENVIRONMENT AND PLANNING COMMITTEE MEETING TO BE HELD ON TUESDAY 24 MAY 2016**

**1 HIGHWAYS & TRANSPORT**

**a) Friends of Yate Station**

To **NOTE** the minutes of the Friends of Yate Station held on 25 April 2016. (Appendix 1)

**b) Customer and Communities Improvement Fund from First Group – Yate Station**

To **NOTE** that a meeting has been arranged to take place at 2.30pm on Monday 23 May 2016 at Badminton Road to discuss the 2016/2017 bid for grant funding from the Customer and Communities Improvement Fund from First Group.

**1/2 Traffic and Transport**

To **NOTE** a meeting has been arranged to discuss Traffic and Transport on Tuesday 7 June 2016 at 6pm, Poole Court.

**1/3 Bus Shelter Review**

Further to minute 5/3 of the meeting of the Environment and Planning Committee held on 15 March 2015;

*'RESOLVED Councillor Tony Davis and Yate Town Council to contact South Gloucestershire Council to advise that if Yate Town Council are to consider potentially installing any bus shelters throughout the town (subject to funding) then Yate Town Council require written confirmation that South Gloucestershire Council will not remove them.'*

South Gloucestershire Council's Transport and Procurement Manager has responded as follows:

*'I can confirm if YTC were to install shelters SGC would record details (including ownership) on the Council Highway asset register and would not carry out any work to those shelters (except in the case of emergencies) unless the owner agreed.'*

*I must presume that the shelters removed some years ago have been disposed of, we have none stored. Generally when shelters are removed they are not fit for re-use with fairly extensive remedial works that might approach the cost of a new replacement.'*

*We do not have a standard specification for bus shelters but do have a Council adopted policy and an associated procurement framework which sets out the minimum standards for construction. The procurement framework has a number of suppliers on it and YTC could use that as a starting point for procurement or*

*look to go with another supplier of your choice. If you are looking to progress this further let me know.'*

To receive any comments.

#### **1/4 Station Road (Salt Truck/Lozenge) Roundabout**

Further to minute number 5/4 of the Environment and Planning Meeting held on 15 March 2016;

*'It was NOTED that:*

- *Crestbridge has agreed to take on the maintenance of the planters by Yate Leisure Centre. South Gloucestershire Council has been informed and they have contacted Yate Shopping Centre Management to agree arrangements;*
- *Crestbridge declined to take on the maintenance of the roundabout/roundabout planters. South Gloucestershire Council has advised of indicative maintenance prices and the maintenance schedule to maintain the roundabout/roundabout planters. Contact has been made with B&Q and Morrisons to see if they would be prepared to fund extra maintenance works (over and above the current South Gloucestershire Council maintenance schedule) and responses are awaited.*

*RESOLVED An approach be made to the Customer Experience Manager at Tesco's to request they consider the maintenance or funding towards the maintenance of the Salt Truck roundabout.'*

To be advised that to date, no response has been received from either B&Q or Morrisons. Tesco has been put in touch with South Gloucestershire Council and are talking about the possibility of Tesco paying for the extra maintenance visits.

To **NOTE** that at the meeting of Full Council on 17 May 2016, it was resolved that Yate Town Council will fund 2 annual maintenance visits by South Gloucestershire Council to the lozenge roundabout at a cost of £180 per visit (to be met from the Open Spaces budget), to continue until the outcome is known about the possibility of Tesco taking this work on.

## **2 TOWN CENTRE**

### **2/1 Yate Town Centre Strategy Group**

- a) To **NOTE** the next meeting of the Yate Town Strategy Group will be held on Thursday 16<sup>th</sup> June 2016 at 6pm, Poole Court.
- b) Further to Minute number 6/1 of the Environment and Planning Meeting held on 15 March 2016;

*'It was reported that North Avon Magistrates Court has been selected for closure. RESOLVED Correspondence to be sent to HM Courts and Tribunal Services advising that Yate Town Council wish to register an interest in the future use of the site for community use.'*

To **NOTE** the following response has been received from HMCTS;

*'It is our intention to sell the building as soon as we are able. The aim is to operationally exit the building by the end of October 2016. I do not yet know when marketing will commence.'*

**2/2 Yate Leisure Centre**

To receive any further information.

**3 TOWN COUNCIL PLAY AREAS, PARKS, OPEN SPACES AND SPORTS FACILITIES**

**3/1 Estate Supervisors Report**

To receive the Estate Supervisor's report. (Appendix 2)

**3/2 Yate & District Bowling**

To **NOTE** a meeting is to be arranged with representatives of Yate & District Bowling Club to discuss the kitchen extension, funding & licence.

To nominate representative to attend.

**3/4 St Mary's Village Green**

Further to Minute No. 7/4 of the Environment and Planning Committee meeting held on 15 March 2016, South Gloucestershire Council has proposed the installation of a bollard (to be flush with the footway when folded down), subject to gaining utility information that installation will be possible.

To receive any further information.

**3/5 Fields in Trust – Centenary Fields**

To consider information received in respect of the Centenary Fields Programme. (Appendix 3)

**3/6 YOSC Lighting**

Further to the meeting of Full Council on 17 May 2016, to receive update in respect of lighting at YOSC.

**4 SOUTH GLOUCESTERSHIRE COUNCIL OPEN SPACE**

**4/1 The Common**

To **NOTE** a draft lease is awaited from South Gloucestershire Council.

**5 SUB-COMMITTEES AND WORKING GROUPS RESPONSIBLE TO ENVIRONMENT AND PLANNING COMMITTEE**

**5/1 Allotments Sub-Committee**

To receive any further information.

**5/2 Planning Sub-Committee**

- a) To receive the minutes of the Planning Sub Committee Meeting held on 17 May 2016. (Appendix 4)
- b) To **NOTE** that the next meeting of the Planning Sub-Committee will be convened depending on the date from which applications are received.

**5/3 Public Rights of Way, Commons and Greens Sub-Committee**

To **NOTE** the next meeting of the Public Rights of Way, Commons and Greens Sub-Committee will take place on Wednesday 1<sup>st</sup> June 2016 at 6pm.

**5/4 Outstanding Reports**

To receive any outstanding reports.

**6 JOINT COMMITTEES RESPONSIBLE TO ENVIRONMENT AND PLANNING COMMITTEE**

**6/1 Joint Cycleway Group**

To **NOTE** that meeting of the Joint Cycleway Group due to be held on 13 April 2016 did not take place. A further meeting is due to be arranged.

**6/2 Outstanding Reports**

To receive any outstanding reports.

**7 REPORTS FROM REPRESENTATIVES ON OUTSIDE BODIES**

*(To NOTE minutes from outside bodies were previously circulated to Members with a request to advise if they wish to discuss matters contained therein. No matters have been raised)*

Friends of Yate Common  
Friends of Kingsgate Park  
Abbotswood Action Group  
Environmental Link Group

Meeting held 23.2.16, circulated 26.4.16  
Meeting held 21.3.16, circulated 05.04.16  
Meeting held 5.1.16, circulated 20.1.16  
Meeting held 12.4.16, circulated 22.4.16  
Meeting held 14.4.16 circulated 9.5.16

## **8 PUBLIC SPACE PROTECTION ORDERS (DOG CONTROL ORDERS)**

Further to minute number 13 of the Environment and Planning Committee held on 11 November 2014, to **NOTE**:

- the Anti-Social Behaviour (ASB) Crime and Policing Bill received Royal Assent in March 2014 and is now a legal Act;
- Dog Control Orders are now part of Public Spaces Protection Orders (PSPO) under the ASB, Crime and Policing Act 2014;
- Public Spaces Protection Orders can only be made by a Local Authority and not by Town and Parish Councils;
- Correspondence has been sent to South Gloucestershire Council requesting they implement the required PSPO's in Yate.

'To **NOTE** that an update is awaited from South Gloucestershire Council with regards the implementation of its policy on PSPOs (which include dog control orders) and the Town Council's request that they implement the required PSPOs in Yate.'

## **9 CONSULTATIONS**

### **9/1 Urgent Consultations**

To receive any urgent consultations.

## **10 WAYLEAVES**

### **10/1 St Mary's Village Green**

Further to minute number 10/1 of the meeting of the Environment and Planning Committee held on 15 March 2016, to **NOTE** that Western Power has withdrawn their request for a wayleave agreement at St Mary's Village Green.

### **10/2 Abbotswood**

Further to minute number 17/2 of the meeting of the Finance and General Purposes Committee meeting held on 2 February 2016;

*'It was NOTED that Yate Town Council Solicitor has requested sight of the terms and conditions of the existing Wayleave at Abbotswood.'*

*RESOLVED Whilst the legalities of the existing Wayleave are investigated correspondence be sent to Western Power Distribution (WDP) advising them to comply with the following for the duration of the works being carried out to existing cables:*

- *WDP understand the area requires 24 hour access and therefore do not obstruct access at any time;*
- *WDP carry out reinstatement works to Yate Town Council's satisfaction upon completion;*

- *WDP notify Yate Town Council as soon as the works are completed so that the site can be inspected.'*

To **NOTE** that investigations in respect of the original wayleave are ongoing.

## **11 FIELDS AT NORTH YATE**

To **NOTE** that a competition is to be launched to encourage members of the public to take photographs of the fields/wildlife/views of North Yate, for historical reference. A small prize to be offered to the winning entry to be funded by the Mayor's Allowance.

\\WIN-6YBWCLRRKWU\shared\Environment and Planning\Clerk's Reports to E&P\2016\15.03.16



**MINUTES OF THE FRIENDS OF YATE STATION MEETING HELD ON MONDAY 24 APRIL 2016 FROM 7.00PM TO 8.10PM AT POOLE COURT.**

**PRESENT:** Councillor Wully Perks (Chair), Councillor John Gawn & Councillor Penny Thoys – Yate Town Council.  
Councillor Claire Young – South Gloucestershire Council  
Linda Swainger - First Great Western.  
Heather Cullimore - Severnside Community Rail Partnership  
Martin Gosney & Dave Winter – Friends of Yate Station  
Sarah Collins & Sylvia Eastwood – In Bloom  
David Redgewell – Campaign for Better Transport  
Julia Alden - Yate Town Council, Clerk.

**1 APOLOGIES FOR ABSENCE**

**RESOLVED** Apologies for absence were received from Richard Kemble - South Gloucestershire Council, Nigel James – First Great Western and David Hardill - Friends of Yate Station.

**2. DECLARATIONS OF INTEREST UNDER THE LOCALISM 2011**

No declarations of interest were received.

**3. MINUTES OF THE MEETING OF THE FRIENDS OF YATE STATION HELD ON 5 OCTOBER 2015**

**RESOLVED** The minutes of the Friends of Yate Station meeting held on 5 October 2015 were received and were agreed to be a true and accurate record.

**4. UPDATE FROM PRINCIPAL TRANSPORT OFFICER, SOUTH GLOUCESTERSHIRE COUNCIL**

The Principal Transport Officer for South Gloucestershire Council sent advice that he is retiring at the end of the month and unfortunately unable to attend the meeting. The Principal Transport Officer also sent well wishes to the Friends of Yate Station wishing the group success with efforts to achieve improvements with the station.

**RESOLVED** A reply to be sent to the Principal Transport Officer thanking him for all his hard work and dedication to the group, he will be sorely missed and the Friends of Yate Station wish him a very happy retirement.

**5. UPDATE FROM GREAT WESTERN RAILWAY**

The representative from Great Western Railway reported the following:-

- Great Western Railway are in talks with South Gloucestershire Council to bring the Metro bus into Parkway Station, a full plan has not yet been agreed;
- Engineering works are due to take place on 1<sup>st</sup> and 2<sup>nd</sup> May 2016 & 28<sup>th</sup>, 29<sup>th</sup> and 30<sup>th</sup> August 2016, no direct services from London Paddington to Swansea – buses will be laid on from Parkway. On 2<sup>nd</sup> May there will be

no trains at all from Parkway Station but buses will be laid on (the line between Parkway and Filton will be completely ;

- The pickup point for shuttle buses from the train station in Yate has been moved to opposite the Esso station, this is a permanent arrangement;
- From 12<sup>th</sup> September until 22<sup>nd</sup> October 2016 the Severn Tunnel is completely closed, therefore no direct service to South Wales, some trains will go via Gloucester but mainly terminate at Parkway. Passengers will not be penalised in terms of cost to re route their journeys;
- The poster on the upside of the platform to be replaced as out of date;
- Possibility of additional carriages for major event such as the Balloon Fiesta and festivals to be raised by the Station Manager
- The 4<sup>th</sup> platform at Parkway Station is due to start construction in 2017 to tie in with electrification in 2018.

## **RESOLVED**

- To invite a representative from Network Rail to the next meeting of the Friends of Yate Station;
- Correspondence to be sent to Network Rail requesting a dedicated EnvironClean unit for Yate.

## **6. UPDATE FROM BRITISH TRANSPORT POLICE**

No update was received from British Transport Police, however the meeting was advised that crime statistics for Yate Station are currently at 6.2% (which is high) due to a spate of bicycle thefts.

The meeting was further advised that a team from British Transport Police may be able to attend events to advise on cycle safety and mark cycles.

**RESOLVED** The Clerk to advise Sarah Collins of forthcoming Yate Town Council events.

## **7. UPDATE FROM IN BLOOM**

The representatives from In Bloom advised that they will not be entering the national In Bloom competition this year, having achieved the highest accolade last year, but this does not mean that their work will not continue;

- the planters and containers will be planted;
- bulbs have been planted at the back of the cat park (which was a hard job due to the compacted soil);
- the Network Rail licence to allow access to certain landscaping areas has been renewed and granted;
- Bark chippings are needing replacing at the entrance to the station – funding is being sought;
- New contractors are doing a good job of controlling vegetation.

## **8. CUSTOMER AND COMMUNITIES IMPROVEMENT FUND APPLICATION 2016**

It was **NOTED** that the bid for a grant from the Customer and Communities Improvement Fund 2016 to improve facilities at Yate Station was unsuccessful, however a bid for 2017 is to be made.

The representative from Severnside Community Rail Partnership commented that it might be prudent to check with other groups in Yate to establish if anyone else is making a bid for 2016 and to work as one application as Great Western Railway prefer to work funding in that way for one area.

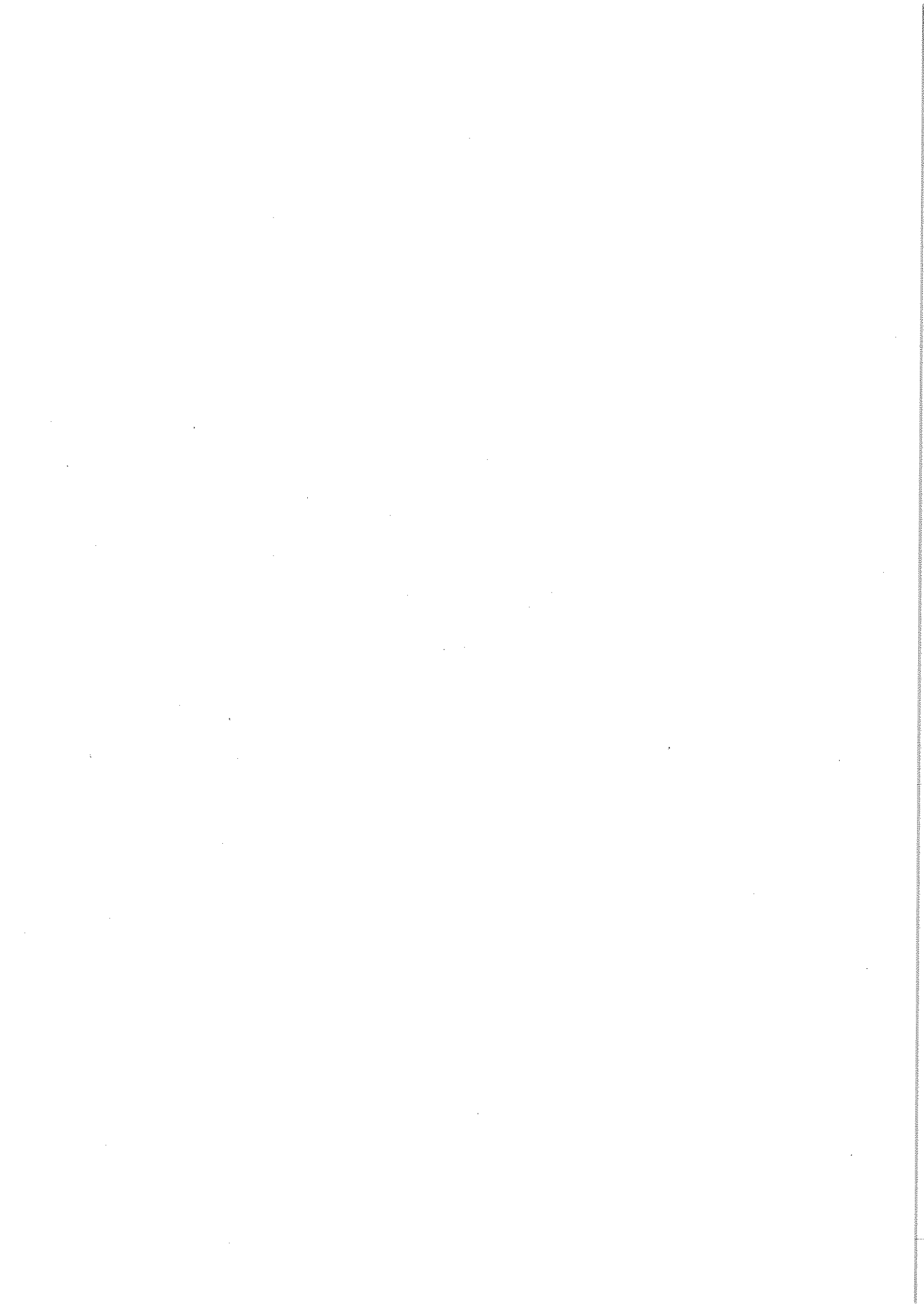
**RESOLVED** Information to be passed to representatives who are attending the meeting to discuss the bid for funding from the Customer and Communities Improvement Fund 2016.

## **9. DATE OF NEXT MEETING**

The next Friends of Yate Station meeting to be held on 5<sup>th</sup> September 2016, 6pm, Poole Court.

Thanks were extended to all those present for attending the meeting.

s/Transport/Friends of Yate Station/Mins/25.04.16  
E&P 24.05.16



**ESTATES SUPERVISOR'S REPORT TO ENVIRONMENT AND PLANNING COMMITTEE TO BE HELD ON TUESDAY 24<sup>th</sup> MAY 2016.**

**1. OPEN SPACES**

**1/1 ABBOTSWOOD**

**a. Conditions Survey**

To receive an update in relation to a surveyor carrying out a condition survey of the site.

**b. Maintenance Plan**

To **NOTE** a maintenance plan for Abbotswood to be circulated.

**1/2 THE COMMON (FOOTBALL PITCHES AREA ONLY)**

To **NOTE** end of season football pitch reinstatement (top soiling and reseeding to worn areas) has been carried out.

**1/2 POOLE COURT TO MOUND**

Everything satisfactory.

**1/4 ST MARY'S GREEN**

Everything satisfactory.

**1/5 TYLERS FIELD**

To **NOTE** that the recently replaced panoramic plaque has been removed by vandals, an order has been placed for a replacement.

**1/6 GOOSE GREEN**

Everything satisfactory.

**1/7 YATE ROCKS**

Everything satisfactory.

**1/8 LONGS DRIVE**

To **NOTE** a soil bund has been installed including two vehicular access bollards.

**1/9 MILLSIDE**

Everything satisfactory.

**1/10 WITCHES HAT OPEN SPACE**

Everything satisfactory.

**1/11 YATE COMMON**

To **NOTE** South Gloucestershire Council has installed a disabled access gateway at the Road to Nowhere entrance to the Common.

## **1/12 BOULES RINK**

To **NOTE**;

- Correspondence has been sent to the White Lion enquiring about a their recent enquire for planning regarding a Boules rink.
- There is already a petanque rink by the Heritage Centre, but as this is within the car park at the rear of the building, it is unusable for regular use.

## **1/12 AUTUMN DAFFODIL PLANTING**

To **NOTE** suitable locations are being investigated for bulb planting using a display of bulbs that will flower between February through to June. Suggested species are as follows: early flowering daffodils followed by white daffodils. These in turn will be followed by blue Camassia and finally purple alliums.

## **2. SPORTS FACILITIES**

### **2/1 SUNNYSIDE SPORTS FIELD**

To **NOTE** end of season football pitch reinstatement (top soiling and reseeding to worn areas) has been carried out.

### **2/2 BOWLS GREEN**

Everything satisfactory.

### **2/3 TENNIS COURTS AT SUNNYSIDE LANE**

Everything satisfactory.

### **2/4 BALL COURT AT HOWARD LEWIS PLAY AREA**

Everything satisfactory.

## **3. PLAY AREAS GENERAL**

To **NOTE** annual maintenance to play equipment has commenced this will include removing of swing chains to grease moving part and check inspect parts such as bushes etc.

### **3/1 EGGSHILL LANE PLAY AREA**

To **NOTE** investigations to large areas of surface water from heavy rain are being carried out. This also causes a problem in the adjacent car park and it has been noted that a storm drain is blocked in the community centre side of the car park. Correspondence has been sent to the centre.

### **3/2 HOWARD LEWIS PLAY AREA**

Everything satisfactory.

### **3/3 KINGSGATE PLAY AREA/KICKABOUT AREAS**

Everything satisfactory.

### **3/4 LONGS DRIVE PLAY AREA**

Everything satisfactory.

**3/5 MILLSIDE PLAY ZONE**

Everything satisfactory.

**3/6 ST MARY'S PLAY AREAS**

Everything satisfactory.

**3/7 TYNDALE AVENUE PLAY AREA**

To **NOTE** the roundabout has been temporary removed due to vandalism. An order has been placed for repairs to be carried out in the next couple of weeks.

**3/8 WELLINGTON ROAD KICKABOUT AREA/OPEN SPACE**

Everything satisfactory.

**3/9 WITCHES HAT PLAY AREA**

Everything satisfactory.

**3/10 PEG HILL SKATEPARK**

To **NOTE**;

- Recent vandalism to the lighting timer box has occurred. The vandals had loosened the box in the ground slightly and changed the timings for the lights to switch off. The front cover although secure is slightly damaged.
- Works to re-concrete the box have been programmed, working in conjunction with South Gloucestershire Council who will isolate the mains power during works.
- South Gloucestershire Council to provide Yate Town Council with a quote for a new pillar box cover.
- An abandoned car was left in love lane adjacent to the Skate Park, and we are liaising with the local police to remove it.

**3/11 LYE FIELD KICKABOUT AREA**

Everything satisfactory.

**3/12 YATE WEST KICKABOUT AREA**

Everything satisfactory.

**3/13 BRINSHAM FIELDS PLAY AREA**

Everything satisfactory.

**4. PARKS**

**4/1 KINGSGATE PARK**

**a. Vintage Birdcage Cakery gate access**

To **NOTE** that Vintage Birdcage Cakery are in the process of carrying out works including the pedestrian safety and the gate to the Town Council's specification. An agreement is to be drawn up and to be signed saying it's our gate.

**b. Park Lighting**

To receive an update at the meeting.

**c. Container**

To **NOTE** an order has been placed for a shipping container to be stored in the Kingsgate compound.

**4/2 BRINSHAM FIELDS AND LAKE**

**a. Byelaws Update**

To **NOTE** the advertisement process for 1 calendar month has ended and the signed and sealed byelaws have been sent off to the DCLG to be checked by the Secretary of State.

**b. Wayleave Application Regarding Underground Power Connection**

To receive an update from discussions with Western Power.

**c. Tesco Fund by Friends of Brinsham**

To **NOTE** the Friends of Brinsham have been successful in receiving the full £12,000 towards their conservation project for the pond. The Friends are working with a company called Groundworks regarding the project with support from the Town Council.

**d. Flash Flooding**

To **NOTE** Peghill developers are being chased regarding the flash flooding in the north east corner of the park caused from drainage of the housing development.

**e. Pier**

To **NOTE** a similar design to the original plan is awaited.

**5. GROUNDS MAINTENANCE GENERAL**

To **NOTE**;

- Tree survey works classified Level 2 have been programmed in and will be completed by mid - June.
- An order for tree Survey at the following sites will be placed as soon as the quotes have been received - Tylers Field, Pop Inn Café, Sunnyside playing field & the Common playing fields, Yate Rocks, YOSC.

**6. BUS SHELTERS**

Everything satisfactory.



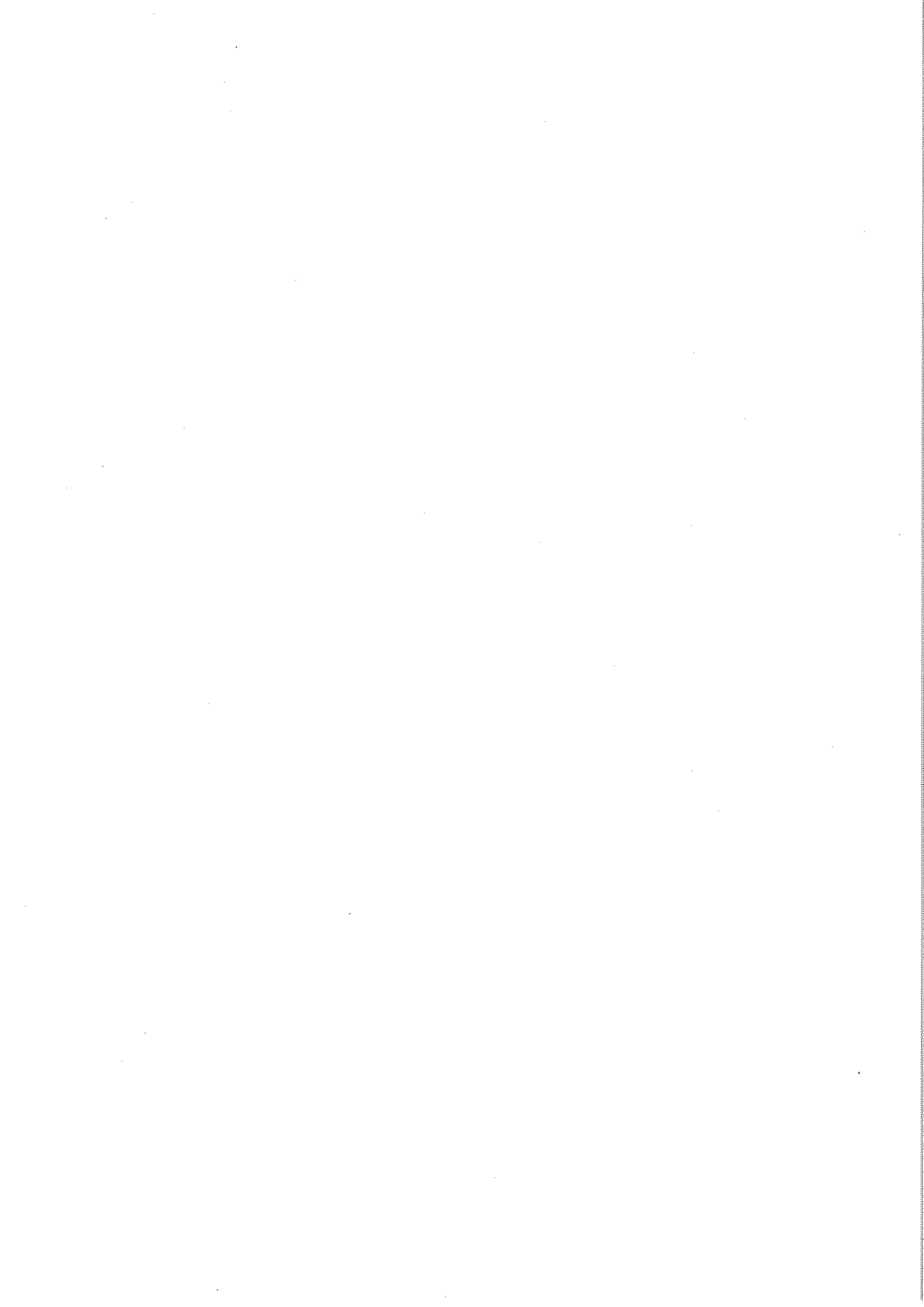
**7. TOWN SEATS**  
Everything satisfactory.

**8. NOTICEBOARDS**  
Everything satisfactory.

**9. LITTER BINS**  
Everything satisfactory.

**10. DOG BINS**  
Everything satisfactory.

J:\Environment and Planning\Estates Supervisors Reports\2016\Estates Supervisor Report 24th May 2016.doc






## CENTENARY FIELDS

Commemorating World War I 2014-2018

The Chairman  
 Yate Town Council  
 Yate Town Council  
 Poole Court  
 Poole Court Drive  
 Yate  
 Bristol  
 BS37 5PP

NEAL0098

16 MAY 2016

Dear Chairman,

### The Centenary Fields Programme – protecting valuable green space across the Country

As we approach the 100<sup>th</sup> anniversary of the Battle of the Somme this July we at The Royal British Legion and Fields in Trust are pleased to introduce the Centenary Fields programme to your Council.

The objective of this nationwide programme is to secure recreational spaces in perpetuity, in honour of the memory of the millions of people who lost their lives in the conflict. We are now inviting Town and Parish Councils to nominate a recreational space to be dedicated as a Centenary Field to commemorate this significant milestone in our shared history and to create a tangible living legacy that will be valued by your local community for generations to come.

As the UK's largest Armed Forces charity and the Custodian of Remembrance, The Royal British Legion is leading the nation in respecting the sacrifices made during World War I.

Fields in Trust – the operating name of the National Playing Fields Association – has been the leading independent charity campaigning to secure and improve playing fields for 90 years with the long standing support of the Royal Family.

Both organisations are therefore pleased to be working together to deliver the Centenary Fields programme, which aims to protect the war memorial parks and playing fields given in memory of those who lost their lives, or other green spaces that have an existing or planned link to World War One. We are both delighted that HRH The Duke of Cambridge is supporting this campaign.

To join us in the Centenary Fields programme please complete the enclosed application form, and return it to us at our freepost address, or scan it and email it to [centenaryfields@fieldsintrust.org](mailto:centenaryfields@fieldsintrust.org).

Alternatively, please contact the Fields in Trust Development Manager for your area: (Angela Lewis on 020 7427 2111, or at [angela.lewis@fieldsintrust.org](mailto:angela.lewis@fieldsintrust.org)) if you have any questions.

Once an appropriate site has been agreed, your council will be required to complete a Deed of Dedication to protect the green space(s) in perpetuity. Please note that this does not require any change to the ownership and management of the site which remains entirely at local level.



The Centenary Fields programme will safeguard in perpetuity our war memorial parks, playing fields and other green spaces in memory of those who lost their lives in World War I.

Working with local authorities and landowners, this project will deliver a fitting tribute to the sacrifices made then by local people, while also protecting our green spaces for the future.

Please support Fields in Trust and The Royal British Legion to commemorate this important landmark in our history and help remembrance to live on through Centenary Fields.

HRH The Duke of Cambridge  
 President, Fields in Trust

Each Centenary Field will be provided with signage indicating its designated status, enabling a local event to be arranged to mark the site's dedication as part of your Centenary commemorations.

In addition, Fields in Trust will be working to raise charitable funds to provide occasional improvement grants to sites protected as part of the Centenary Fields programme.

During these difficult economic times we believe that this programme has the dual merits of being inexpensive to implement whilst also appropriately recognising the enormous sacrifice made by earlier generations for us all.

We look forward to hearing from you and hope you will join us in commemorating World War I through the Centenary Fields programme.

Yours sincerely,



**Tim Phillips CBE**  
Chairman  
Fields in Trust



**Dr Chris Simpkins**  
Director General  
The Royal British Legion



**MINUTES OF THE PLANNING SUB-COMMITTEE MEETING HELD ON TUESDAY 17<sup>th</sup> MAY 2016 FROM 6.30PM – 7.05PM AT POOLE COURT, YATE.**

**PRESENT:** Councillors Tony Davis, Ben Campbell, Karl Tomasin, John Gawn and Senior Administrative Officer (YTC)

**1. APOLOGIES FOR ABSENCE**

**RESOLVED** Apologies for absence were received from Councillors Cheryl Kirby, Chris Willmore, Wully Perks, Aziz Chowdry, Sue Walker, Alan Monaghan, John Ford, Penny Thoyts, Ian Blair, John Davis, Mike Drew, Margaret Marshall and Chris Edmonds.

**2. MEMBERS' DECLARATION OF INTERESTS**

None

**3. PLANNING APPLICATIONS**

The meeting considered planning applications received from South Gloucestershire Council.

It was **RESOLVED** that comments contained in Appendix 1 be submitted to South Gloucestershire Council.

**4. MONTHLY LIST OF DECISIONS**

The Monthly List of Decisions 1.4.2016 to 30.4.2016 were received and **NOTED**.

**5. DATE OF NEXT MEETING**

The next Planning Sub Committee meeting will be held on:

**Tuesday, 24<sup>th</sup> May 2016 at 7.00pm.**





## YATE TOWN COUNCIL PLANNING APPLICATIONS 17<sup>th</sup> May 2016

Link to South Glos Council Planning Website:

<http://developments.southglos.gov.uk/online-applications/>

Ref. No.	PK16/1750/PDR
Description	Erection of single storey rear extension to form additional living accommodation. Case Officer Hanni Osman
Location	26 Rectory Close Yate Bristol South Gloucestershire BS37 5SB
Applicant	
Received	11th May 2016
YTC Comments	No objection

Ref. No.	PK16/2593/PDR
Description	Erection of single storey rear extension to form additional living accommodation. Case Officer Fiona Martin
Location	16 Laddon Mead Yate Bristol South Gloucestershire BS37 7NG
Applicant	
Received	11th May 2016
YTC Comments	No objection

Ref. No.	PK16/2449/RVC
Description	Variation of condition 12 attached to planning permission PK12/1913/O to allow for a programme for archaeological investigations across the site.
Location	Land North Of Brinsham Park Yate Bristol South Gloucestershire BS37 7JT. Case Officer Marie Bath
Applicant	
Received	10 <sup>th</sup> May
YTC Comments	Object. Oppose any reduction in the archaeological conditions as we know there was mining on the land.

Ref. No.	PK16/2417/F (Adjoining Parish)
Description	Re-development of existing waste management facility to a single level facility with covered bays for recyclable materials, HGV parking, vehicle wash down area, fuel tank, weighbridge and office, storage areas, landscaping and associated works. Case Officer Simon Ford
Location	Bulking Yard Collett Way Great Western Business Park Yate Bristol
Applicant	
Received	10th May 2016
YTC Comments	No objection

Ref. No.	PK16/2372/F
Description	Erection of agricultural building for storage of fodder and machinery. Alteration of existing vehicular access. Case Officer Trudy Gallagher
Location	Tanhouse Farm Tanhouse Lane Yate Bristol South Gloucestershire
Applicant	
Received	10 <sup>th</sup> May 2016
YTC Comments	No objection, providing purely for agricultural use.

Ref. No.	PK16/2299/TRE
Description	Works to 1no. oak tree to reduce height to 8 metres with a radial spread of up to 8 metres covered by Tree Preservation Order TPO 383 dated 16th September 1987. Case Officer Simon Penfold
Location	64 Clayfield Yate Bristol South Gloucestershire BS37 7HU
Applicant	
Received	4 <sup>th</sup> May 2016
YTC Comments	Neither object or support. Rely on Tree Officer report.



Ref. No.	PK16/2297/F
Description	Erection of attached single garage. Case Officer David Stockdale
Location	71 Chedworth Yate Bristol South Gloucestershire BS37 8RZ
Applicant	
Received	4 <sup>th</sup> May 2016
YTC Comments	No objection

Ref. No.	PK16/2055/ADV
Description	Display of 2no. internally illuminated fascia signs and 6no. non-illuminated post mounted windbreak signs. Case Officer Hanni Osman
Location	Deans Diner Unit 8, Yate Riverside Link Road Yate Bristol
Applicant	
Received	29 <sup>th</sup> April 2016
YTC Comments	No objection

Ref. No.	PK16/1969/F (revised proposals)
Description	Installation of 11no. condenser units and 1no. air handling unit to roof with associated works. Case Officer Griff Bunce
Location	Unit 3 Yate Riverside Yate South Gloucestershire BS37 4AP
Applicant	
Received	28 <sup>th</sup> April (responses by 19 <sup>th</sup> May 2016)
YTC Comments	No objection

Ref. No.	PK16/1780/ADV (revised proposals)
Description	Consent to display 1 no. internally illuminated fascia sign, 1 no. non illuminated fascia sign and 1 no. external portal. Case Officer Griff Bunce)
Location	Unit 3 Yate Riverside Yate South Gloucestershire BS37 4AP
Applicant	
Received	28 <sup>th</sup> April (responses by 19 <sup>th</sup> May 2016)
YTC Comments	No objection

Ref. No.	PK16/2049/PNH
Description	Erection of a rear extension which would extend beyond the rear wall of the original house by 4.8 metres, for which the maximum height would be 3.35 metres and the height of the eaves would be 2.4 metres. Hanni Osman
Location	20 Sunningdale Yate Bristol South Gloucestershire BS37 4HD
Applicant	
Received	18 <sup>th</sup> May 2016
YTC Comments	Neither support or object.

## TABLED ITEMS

Ref. No.	PK16/2725/PDR
Description	Demolition of existing conservatory. Erection of single storey rear extension to form additional living accommodation.
Location	82 Canterbury Close Yate Bristol South Gloucestershire BS37 5TY
Applicant	
Received	16 <sup>TH</sup> May 2016
YTC Comments	No objection

Ref. No.	PK16/1502/F
Description	Demolition of existing canopy to facilitate erection of 4no. 50t silos to provide additional storage. Erection of replacement canopy.
Location	Sharp Interpack Limited Highway Yate South Gloucestershire BS37 7AA
Applicant	
Received	13 <sup>th</sup> May 2016
YTC Comments	Object. YTC objected to original silo application due to visual impact therefore see no reason to support further application. Object on grounds of visual impact –Suggest lower the height of the silos to reduce visual impact Impact of site to Ridgewood nature reserve . Expect to see landscaping enhancements/screening along boundary

